



## 940 WOODLANDS PARKWAY

The Corporate Woods  
Vernon Hills, Illinois

**Unit:** 11,801 Sq. Ft.

**Office:** 1,352 Sq. Ft.

### TERMS:

Base Rent: \$6.95 Net  
Escalation: 3% Per Year  
Real Estate Taxes: \$1.55 (2017 Est.)  
CAM & Insurance: \$1.25 (2017 Est.)

### HIGHLIGHTS:

- Fully Air Conditioned
- Lower Lake County Taxes
- Quality Finishes Throughout
- Includes T-8 High Efficiency Lighting

### BUILDING DATA:

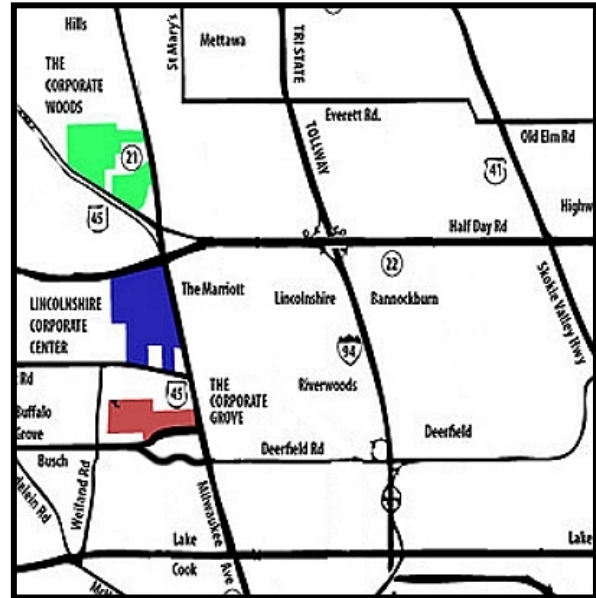
Ceiling Height: 16'  
Sprinkler System: Yes

### SHIPPING:

Truck Docks: 2 (Exterior)

### POSSESSION:

Immediate



### Exclusive Leasing and Management Agents

## VAN VLISSINGEN AND CO.

One Overlook Point  
Lincolnshire Corporate Center  
Lincolnshire, Illinois 60069

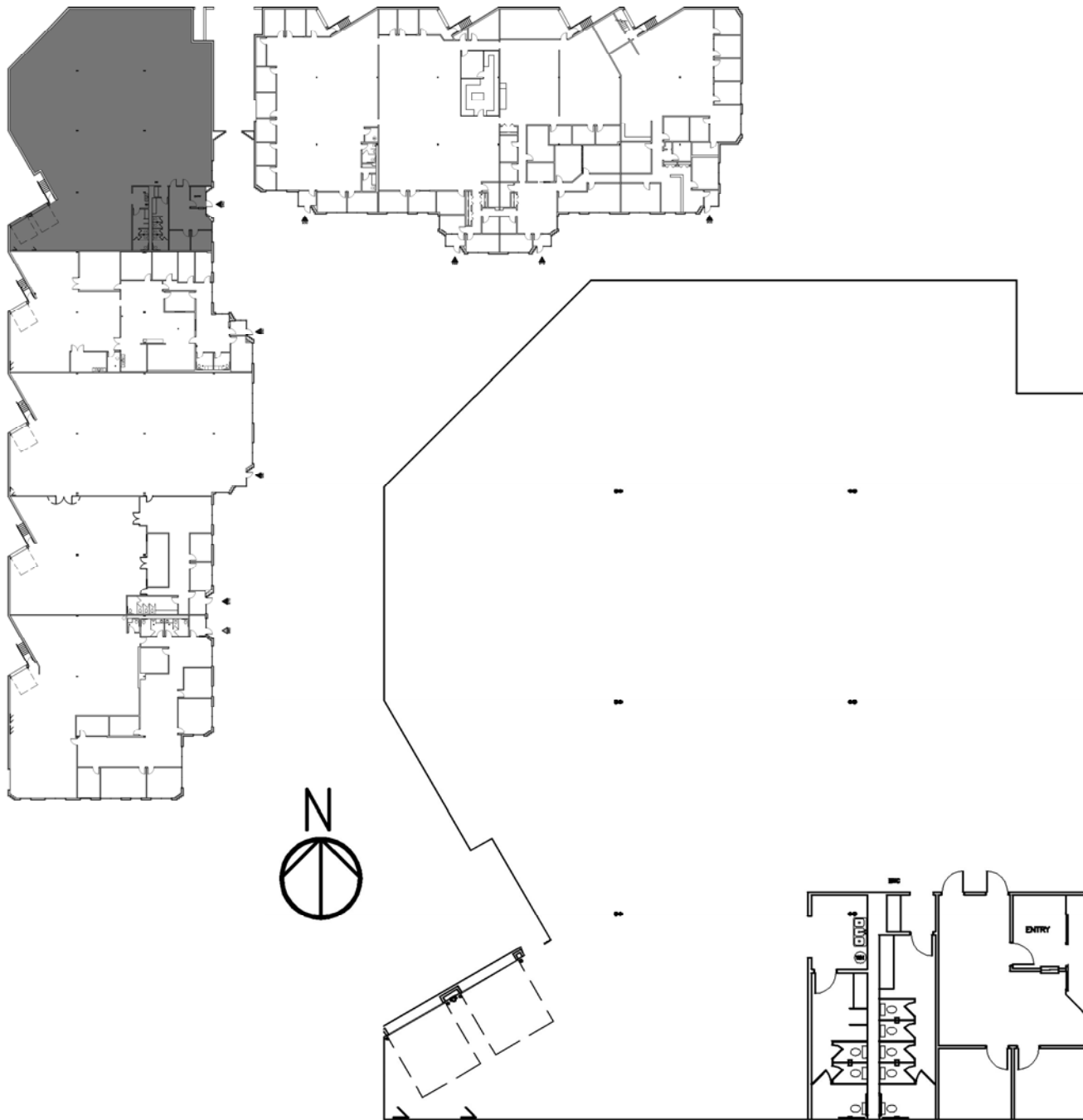
**847.634.2300**

Chuck Lamphere, President  
[crl@vvco.com](mailto:crl@vvco.com)

Nick Panarese, Vice President  
[ndp@vvco.com](mailto:ndp@vvco.com)

# 940 WOODLANDS PARKWAY

The Corporate Woods  
Vernon Hills, Illinois



## Exclusive Leasing and Management Agents

 **VAN VLISSINGEN AND CO.**

One Overlook Point  
Lincolnshire Corporate Center  
Lincolnshire, Illinois 60069

**847.634.2300**

**Chuck Lamphere, President**  
[crl@vvco.com](mailto:crl@vvco.com)

**Nick Panarese, Vice President**  
[ndp@vvco.com](mailto:ndp@vvco.com)

*Above information is subject to verification and no liability for errors or omissions is assumed. Price is subject to change and listing withdrawn without notice. Members of this firm have an ownership interest in this property. © Copyright 2011 All Rights Reserved*