



**Suite 120**  
**5,775 Sq. Ft.**  
**333 KNIGHTSBRIDGE PARKWAY**  
 Lincolnshire Corporate Center

**Extensive Glass Entry Fronts**  
**Newly Designed First Floor Lobby**

**HIGHLIGHTS:**

- Prominent location at the Northwest Corner of Milwaukee Ave and Knightsbridge Parkway
- Two-story atrium lobby with newly renovated common areas
- Two individual HVAC units per floor to accommodate efficient after hours operations
- Dedicated freight elevator and loading docks
- Outdoor fountain, walking/jogging paths
- Directly adjacent to Marriott Spring Hill Suites, Walker Brothers & Sullivan’s Steak House
- Easy access via walking paths to other Lincolnshire Corporate Center hotels, restaurants and daycare center
- Enjoy Cheesecake Factory, Lincolnshire Commons restaurants and shopping
- Directly across Milwaukee Avenue from Marriott Lincolnshire Resort
- Minutes to new Lifetime Fitness in The Corporate Woods
- Walk to public transit connections

**TERMS:**

Base Rent: \$14.95 Net Per Sq. Ft.  
 Operating & Real Estate  
 Tax Expenses: \$8.55 (2017 Est.)  
 Escalation: \$.50 /Sq. Ft. /Year  
 Possession: Immediate



**Exclusive Leasing and Management Agents**

**VAN VLISSINGEN AND CO.**  
 One Overlook Point  
 Lincolnshire Corporate Center  
 Lincolnshire, Illinois 60069  
**847.634.2300**

**Chuck Lamphere, President**  
[crl@vvco.com](mailto:crl@vvco.com)

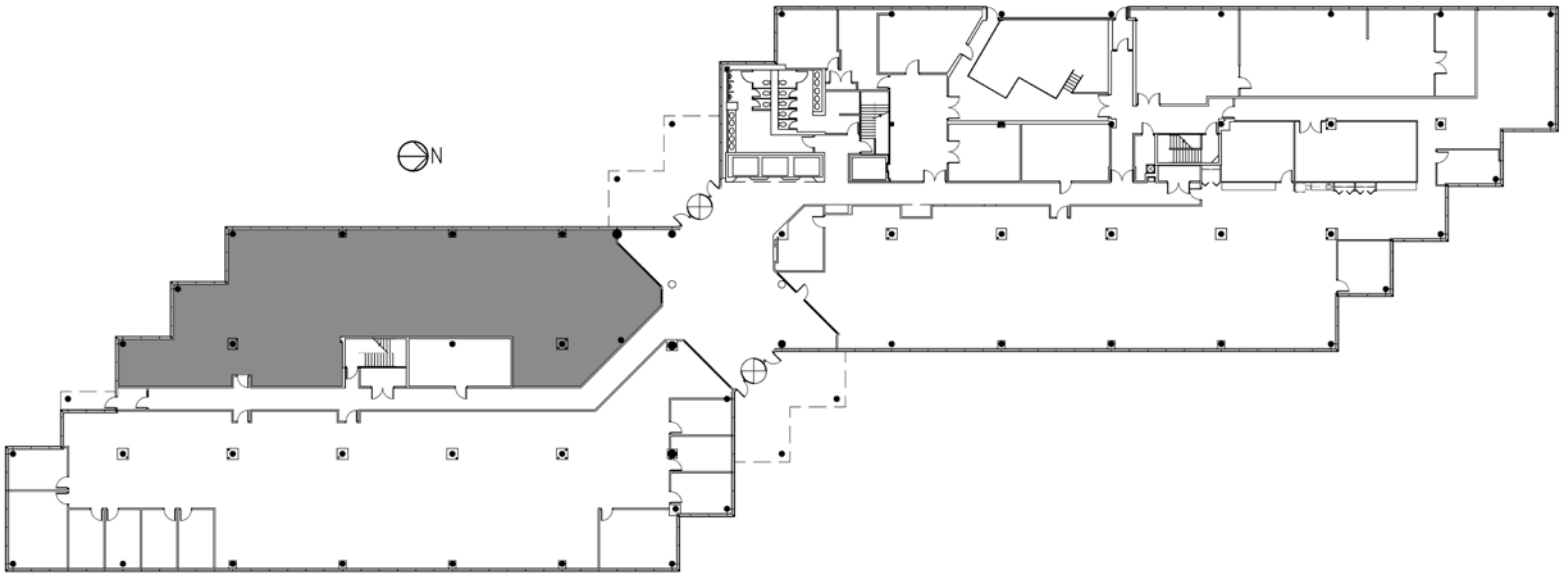
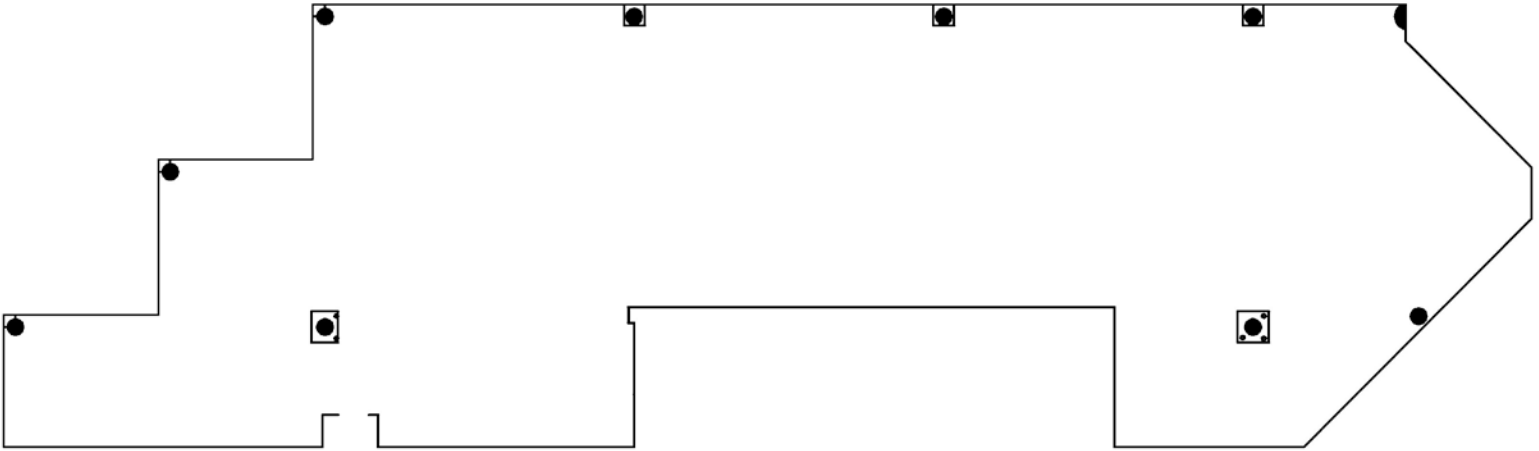
**Nick Panarese, Vice President**  
[ndp@vvco.com](mailto:ndp@vvco.com)

## Suite 120

5,775 Sq. Ft.

333 KNIGHTSBRIDGE PARKWAY

Lincolnshire Corporate Center



### Exclusive Leasing and Management Agents



#### VAN VLISSINGEN AND CO.

One Overlook Point  
Lincolnshire Corporate Center  
Lincolnshire, Illinois 60069

**847.634.2300**

Chuck Lamphere, President  
[crl@vvco.com](mailto:crl@vvco.com)

Nick Panarese, Vice President  
[ndp@vvco.com](mailto:ndp@vvco.com)

*Above information is subject to verification and no liability for errors or omissions is assumed. Price is subject to change and listing withdrawn without notice. Members of this firm have an ownership interest in this property. © Copyright 2011 All Rights Reserved*