



1330 BUSCH PARKWAY

The Corporate Grove
Buffalo Grove, Illinois

Unit: 3,639 Sq. Ft.

Office: 1,650 Sq. Ft.

TERMS:

Base Rent: \$9.95 Net

Escalation: 3% Per Year

Real Estate Taxes: \$1.90 (2017 Est.)

CAM & Insurance: \$1.60 (2017 Est.)

HIGHLIGHTS:

- Abundant Restaurants, Hotels and Fitness Center Nearby
- Lower Lake County Taxes
- Quality Construction Throughout
- Includes T-8 High Efficiency Lighting

BUILDING DATA:

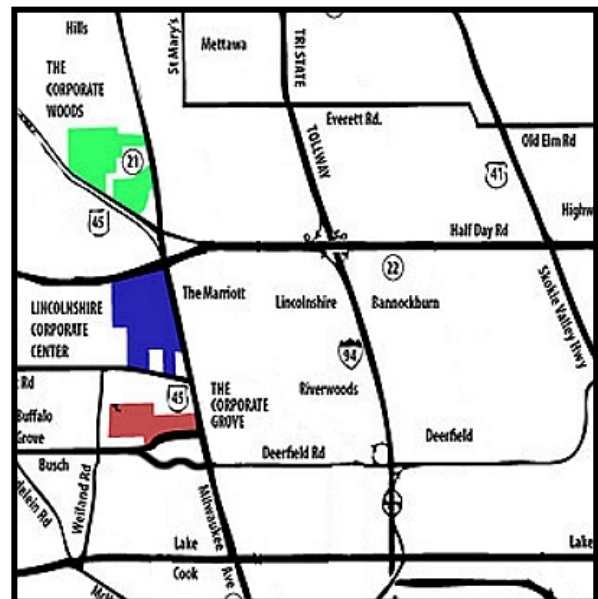
Ceiling Height: 14'
Sprinkler System: Yes
Power: 100 Amps
Air-Conditioned Warehouse

SHIPPING:

Truck Docks: 4 (Shared Exterior)
Drive-in Door: 1

POSSESSION:

Immediate



Exclusive Leasing and Management Agents

VAN VLISSINGEN AND CO.

One Overlook Point
Lincolnshire Corporate Center
Lincolnshire, Illinois 60069

847.634.2300

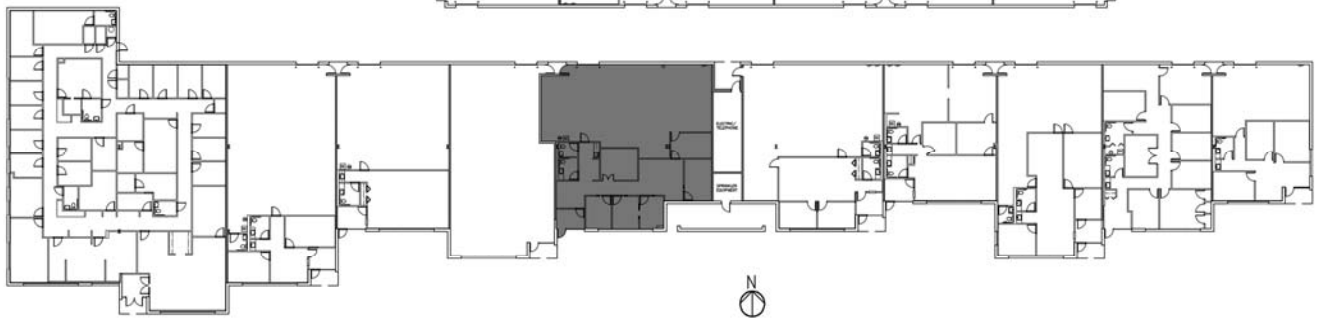
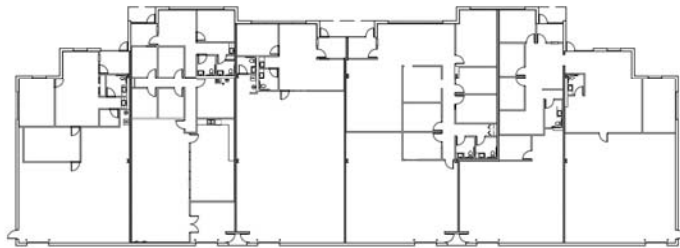
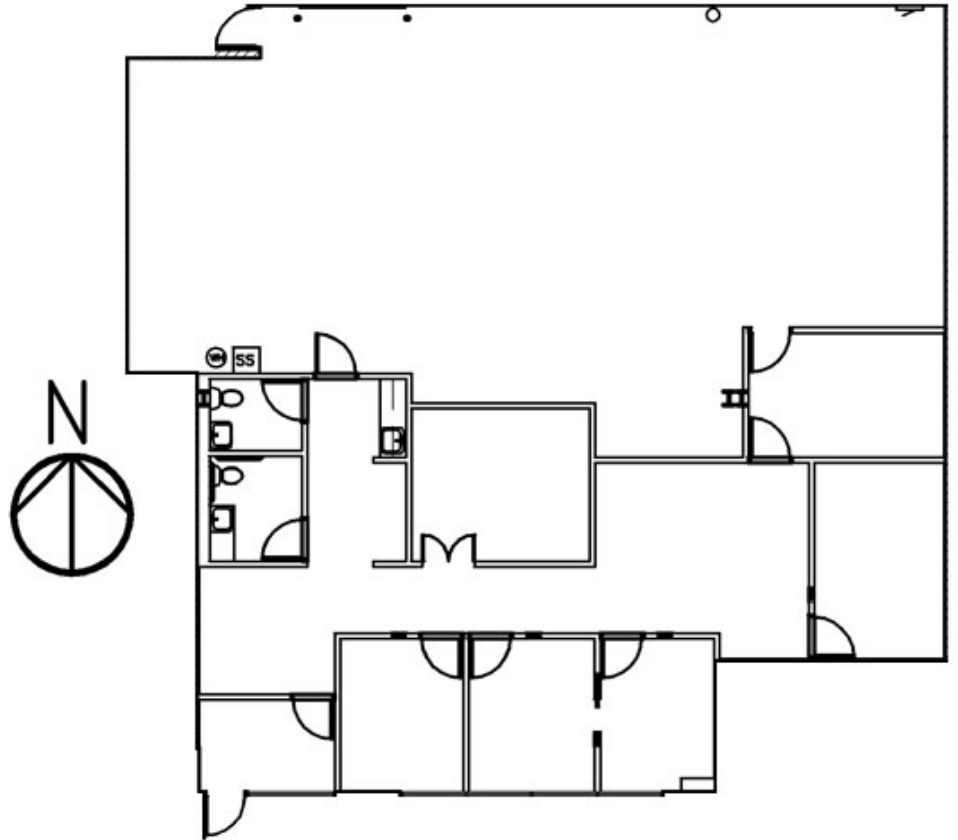
Chuck Lamphere, President
crl@vvco.com

Nick Panarese, Vice President
ndp@vvco.com

Above information is subject to verification and no liability for errors or omissions is assumed. Price is subject to change and listing withdrawn without notice. Members of this firm have an ownership interest in this property. © Copyright 2011 All Rights Reserved

1330 BUSCH PARKWAY

The Corporate Grove
Buffalo Grove, Illinois



Exclusive Leasing and Management Agents

VAN VLISSINGEN AND CO.

One Overlook Point
Lincolnshire Corporate Center
Lincolnshire, Illinois 60069

847.634.2300

Chuck Lamphere, President
crl@vvco.com

Nick Panarese, Vice President
ndp@vvco.com

Above information is subject to verification and no liability for errors or omissions is assumed. Price is subject to change and listing withdrawn without notice. Members of this firm have an ownership interest in this property. © Copyright 2011 All Rights Reserved